

KONFETTI'S

**I LOVE SNOW
#K-47 5' SNOWGIRL**



**Supplies Needed:
LISTED INSIDE**



SUPPLIES

2 - 8' SPLIT RAIL TIMBERS
SIZE 13 MENS BROWN BOOTS
10 LBS POLYFIL
PAINT- ANTIQUE WHITE, ORANGE, CLEAR TEX
4 YARDS WHITE FELT
2 ½ YARDS BLACK SHAGGY FELT
1/8 YARD RED PLUSH FELT
WHITE CROCHET THRREAD
2 YARDS DRESS FABRIC
1 YARD GOLD KNIT (HAT)
TAN DYE

SUPPLIES

2 - 8' SPLIT RAIL TIMBERS
SIZE 13 MENS BROWN BOOTS
10 LBS POLYFIL
PAINT- ANTIQUE WHITE, ORANGE, CLEAR TEX
4 YARDS WHITE FELT
2 ½ YARDS BLACK SHAGGY FELT
1/8 YARD RED PLUSH FELT
WHITE CROCHET THRREAD
2 YARDS DRESS FABRIC
1 YARD GOLD KNIT (HAT)
TAN DYE

COPYRIGHT 1998 KONFETTI'S - ALL RIGHTS RESERVED. ANY TYPE OF MECHANICAL REPRODUCTION OR PHOTOCOPYING IS PROHIBITED. ALL PATTERNS IN THIS BOOK MAY BE MADE FOR PERSONAL USE, FUN OR PERSONAL PROFIT (YOUR LOCAL CRAFT SHOW) BUT MAY NOT BE REPRODUCED FOR MASS MARKETING. ALL INFORMATION IS BROUGHT IN GOOD FAITH. KONFETTI'S IS NOT RESPONSIBLE FOR HUMAN ERROR OR INDIVIDUAL WORKMANSHIP.

**KONFETTI'S
9160 W. 96th DR.
Westminster, CO. 80021
303-424-6488**

General instructions

read all instructions before starting.

RSO-right side out RST-right sides together

use ¼" seam allowance. Spray tan dye- I use tan rit dye and mix with hot water. About 1/3 part dye to 2/3 parts water. For a darker look, mix dye more concentrated. Mix in spray bottle. Spray onto project.

Dry brush - I use an old stiff brush. Dip into paint. Rub most of the paint off onto a paperbag or paper towel, then brush onto project.

Snowgirl- because this pattern is so big, I used newspaper to make a pattern template.

You will need to tape several large pieces of newspaper together. Trace coat pattern onto other sheets of paper before cutting body pattern.

Tape body pattern pages together where shown. Cut out. Fold newspaper in half down the center. Lay pattern center line on folded edge of newspaper. Trace pattern onto newspaper adding the extra inches for the legs. Also cut out hand pattern. Cut out pattern from newspaper. Lay onto double layer white felt. Trace 1 body and 2 hands onto felt. Tracing line is sewing line. (except between the legs where shown, also at ends of hands) pin felt together so it doesn't move when sewing. Sew on traced lines. Leave open at ends of hands, bottom of legs and at inner leg seams. Cut out. Make a slit through one layer of felt in back of body. Turn body and hands rso. Stuff hands, head, neck and sides of body tightly. Put a little polyfil in center of body. Using an 8' timber split rail, saw in half (2) 4' pieces. (you can get this at any lumber yard. Put each timber up through leg opening, pushing up until it goes to shoulders. The timber should be laying on a layer of stuffing. Finishing stuffing body tightly. Stuffing between timbers, and on top. (you should have it stuffed tight enough that you can not feel the timbers in the body. (I used 10 lbs. Of polyfil.) legs- whip stitch inner leg seams using 2 strands heavy thread. You may have to pull felt edges together tightly. Whip stitch slit on body shut. Use crochet thread and satin stitch nose and eyes onto face (any color, you will be painting over this)

Mix off white paint and snowtex together. Paint hands, head, neck, and legs . let dry.

Use terra cotta paint (orange) and paint over the satin stitched nose. Use black paint and paint over the eyes.

Coat - use newspaper again to make coat pattern. Using the body pattern see lines for coat and lay 2 ½" from fold of newspaper (you are adding 2 ½" to coat center) add coat sleeves where shown. Cut coat pattern. Open on fold and cut 2 from black shaggy felt. Cut up center of coat on one layer of felt only (front) Cut 2 collar linings from black shaggy felt. With rst lay lining on collar fronts. Line up top to top and center of lining to center of coat. Sew lining where shown. Turn collar rso. With rst, sew shoulder seams. Sew from sleeve end to 1 ½" of lining. Do both sides. Sew underarm and sides seams. Turn coat rso. Use 2 strands white crochet thread and sew a button hole stitch around edges of coat. Making large stitches. Cut 1 heart from red plush felt. Whip stitch heart to front of coat. (leaving room for the words I and snow. The easiest way I found to transfer onto shaggy felt is to try to write with a pen onto the felt. It indents the felt enough to have a guide. Write I and snow onto coat. Back stitch words using 4 strands white crochet thread. Do not pull thread tightly when backstitching onto shaggy felt. Put coat on doll. You may need to pull the coat to fit her figure. The front center should over lap about 1 ½"

Skirt - cut (2) 26" x 70" from skirt fabric. Cut (1) 13" x 8" from same fabric (for neck area) with rst sew side seams of skirt together (the 26" edge) fold hem up 1" and sew a primitive running stitch around hem. Using heavy thread sew a gather stitch around waist . put skirt on girl . waist will go about 1 ½" under coat bottom. Pull gather threads tightly .

tie and knot. Fold back 1" the 13" x 8" piece of fabric. (the 13" edge) put hot glue around the edges of this piece of fabric and glue at neck, from shoulder to shoulder. Pull coat over skirt, overlap center front with heart over other side. Use black thread and sew a running stitch through coat front centers to hold in place. Fold collar down, and tack stitch to hold. Hot glue bottom hem of coat to skirt. Sew 4 large white buttons on front of coat.

Put hot glue onto ends of sleeves and put hands into sleeve ends. Thumbs up. hot glue hand to chest (side without heart) you may have to use a lot of glue (be careful) and hold hand in place until glue is set.

Hat - cut 1 from gold knit fabric (I used a knit blanket) 24" x 48". Fold in half (12" x 48") with rst sew one end seam and side seam. Turn rso. Fold open end up twice 2 ½". With seam in back put hat on head. Wrap hat around neck, to back. Whip stitch hat end to back of hat.

Boots- I used size 13 mens boots (look at the thrift store or garage sales) measure the size of your timber before getting boots. Put boots on legs. They will fit snug. Lace tightly.

Dry brush cheeks and hands with barn red paint. Spray tan dye doll and clothes. Put a shovel or broom in through her arms.

coat line ↓

2 1/2" from center body
for center coat ↓

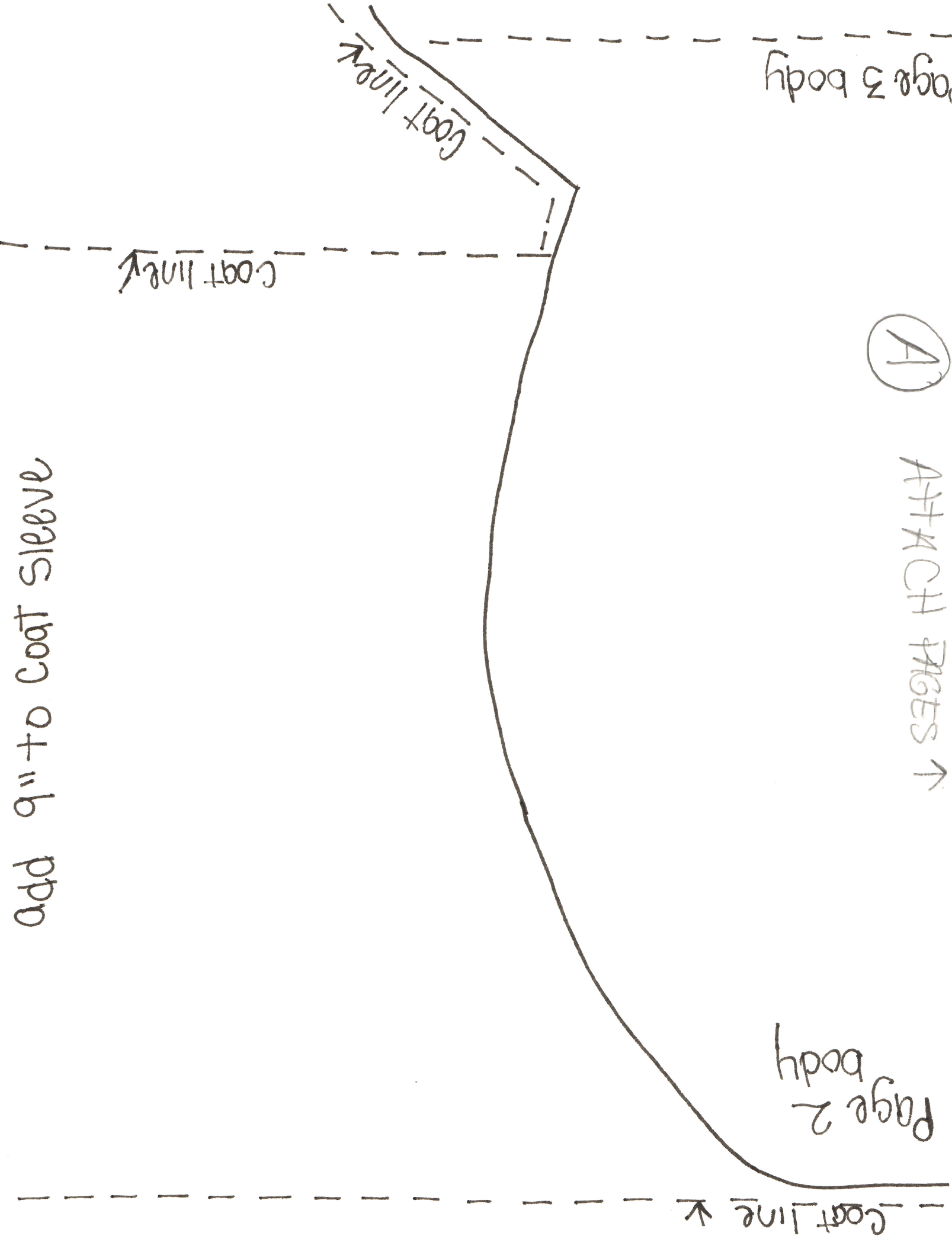
Center body

attach-at ↑ to top of

attach to bottom of p6 ↓

(A) ATTACH PAGES ↓

Add 9" to Coat Sleeve



A

ATTACH PAGES →

Page 2
body

Page 3 body

Coat line

Coat line

Coat line

2 1/2" from Center body
for center Coat ←

Center body

TOP

Collar 1 1/2" long
2" for right side
2" for left side
2.5" for top



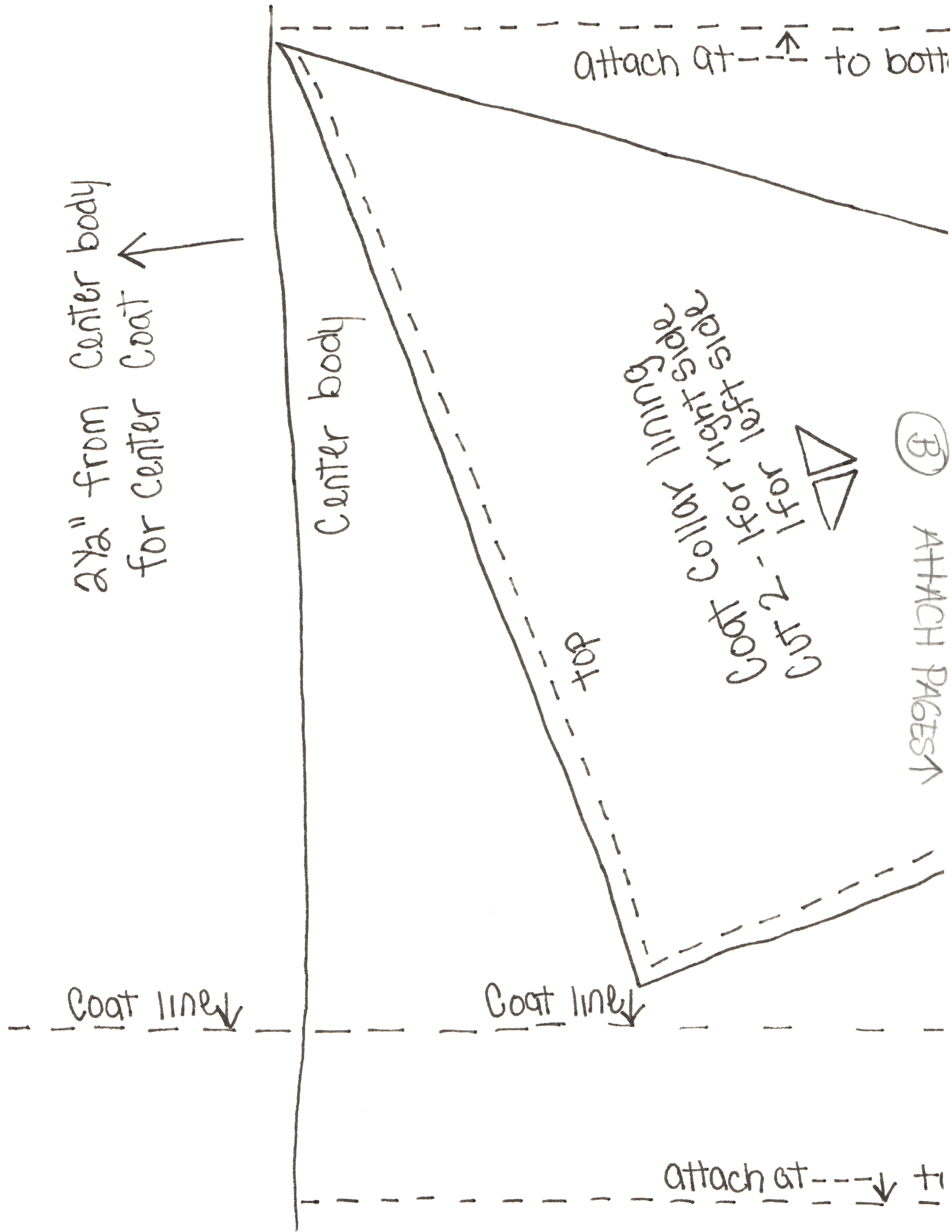
(B) ATTACH PAGES ↓

Coat line ↓

Coat line ↓

attach at --- ↓ ---

attach at --- ↑ --- to bott



o bottom of page 3 body

page 4 body

Ⓢ ATTACH PAGES ↓



outer leg



attach at 

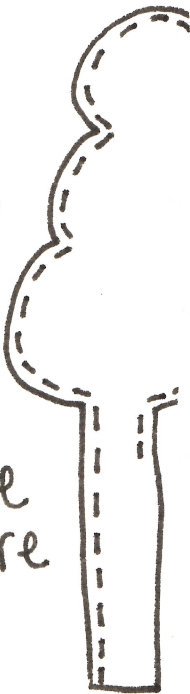
center body

① ATTACH PAGES 

leave open from
to bottom of leg
on inner leg seam

inner leg

yes tracing
line is sewing
line. this picture
just shows where
to leave open.



add 16" to legs

leave open ↑

hands - trace 2 on double
layer white felt.
+ tracing line is sewing line

ATTACH
PAGES ↓
D

cut 1 heart from
red plush felt
(heart for coat)

① ATTACH
PAGES ↓

